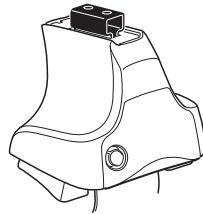
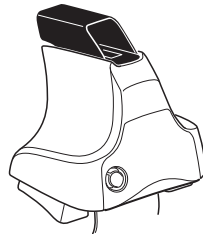
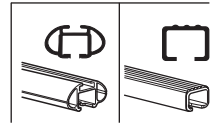


# Kit 1564

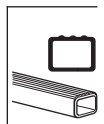
VOLKSWAGEN Polo (Mk.V), 5-dr Hatchback, 09–



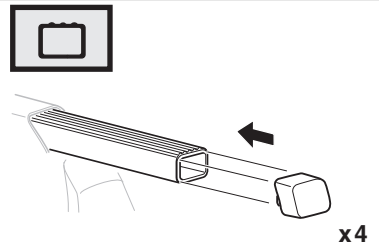
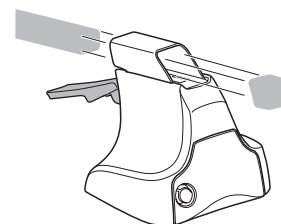
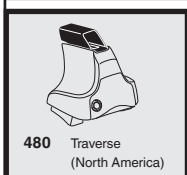
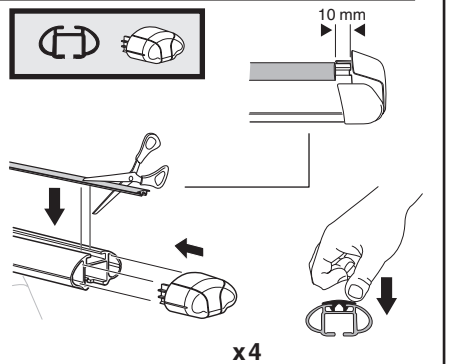
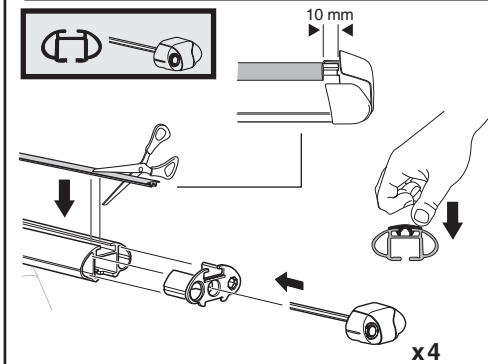
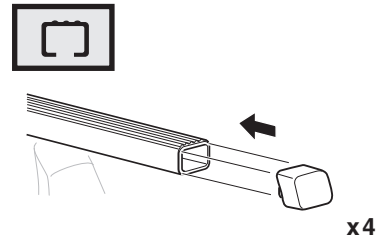
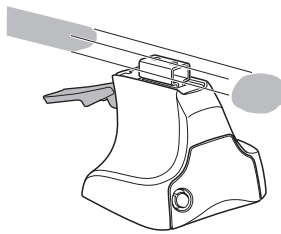
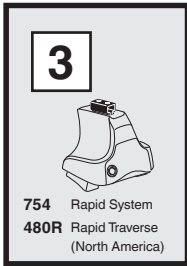
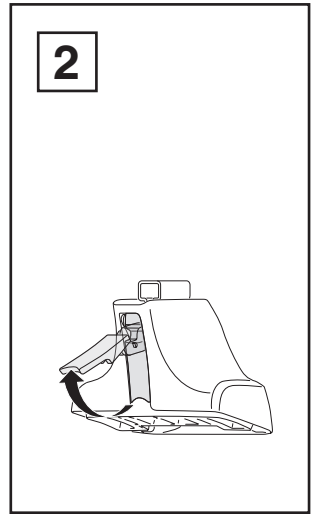
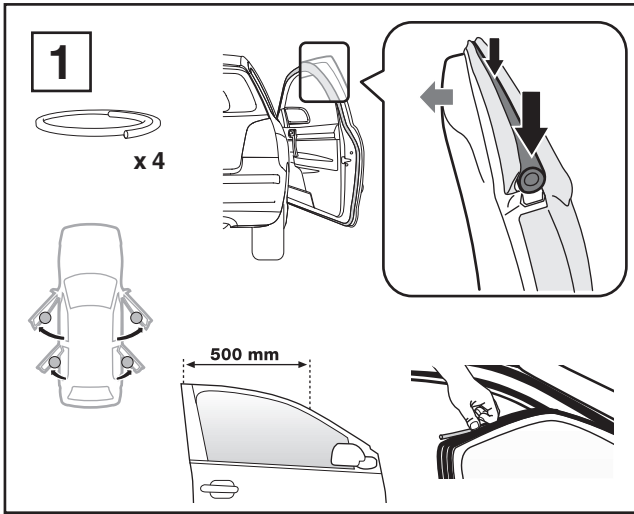
754 Rapid System  
480R Rapid Traverse (North America)



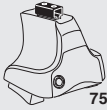
480 Traverse (North America)



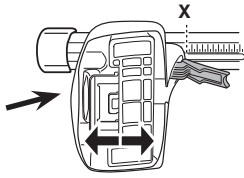




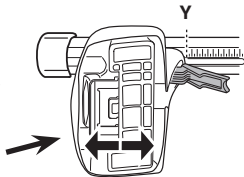
4



754 Rapid System



	X
VOLKSWAGEN Polo (Mk.V), 5-dr Hatchback, 09–	37



	Y
VOLKSWAGEN Polo (Mk.V), 5-dr Hatchback, 09–	33

4



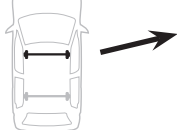
480R Rapid Traverse



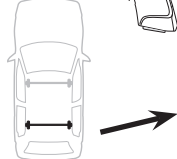
480 Traverse



(North America)

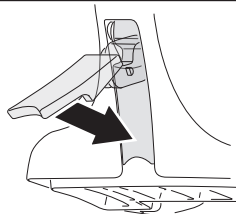


	X inch	X mm
VOLKSWAGEN Polo (Mk.V), 5-dr Hatchback, 09–	40 1/4"	1021 mm



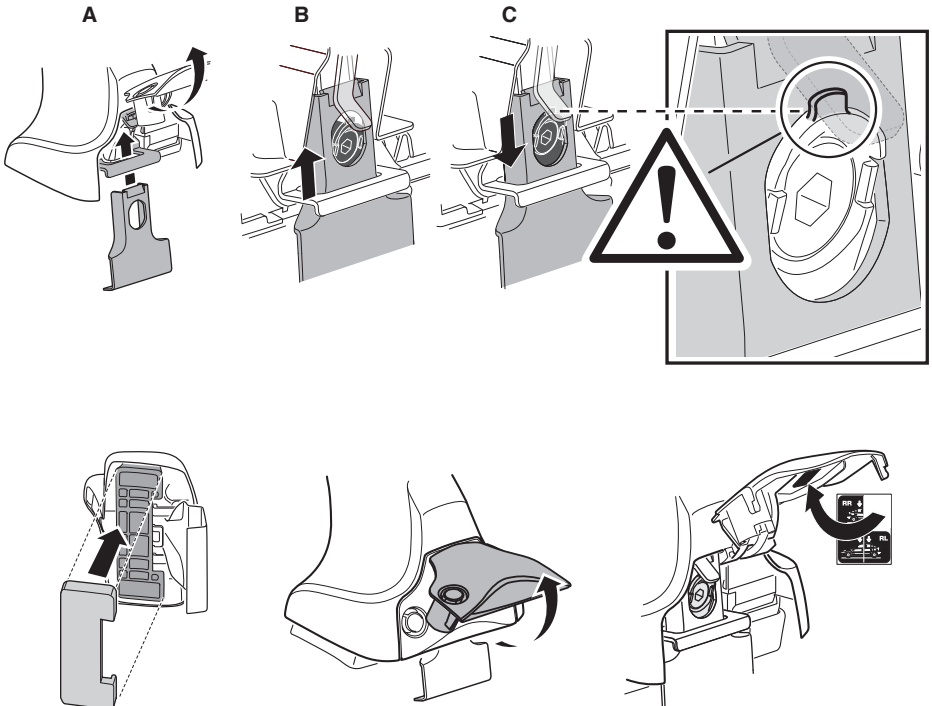
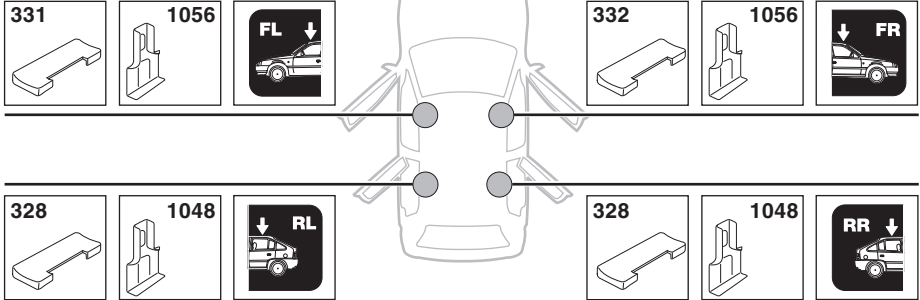
	Y inch	Y mm
VOLKSWAGEN Polo (Mk.V), 5-dr Hatchback, 09–	38 5/8"	981 mm

5

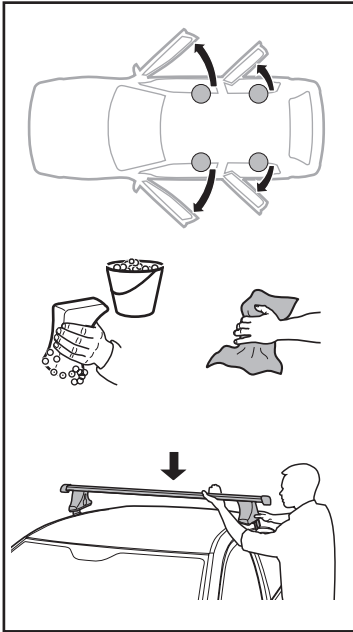


6

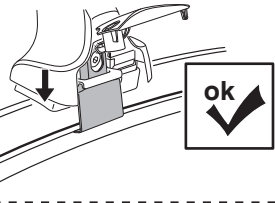
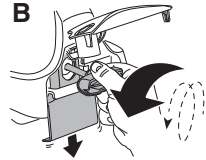
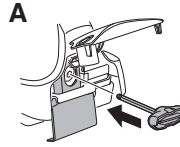
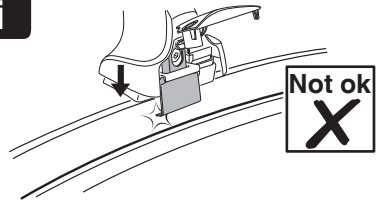
VOLKSWAGEN Polo (Mk.V), 5-dr Hatchback, 09–



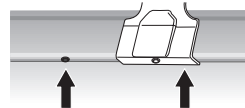
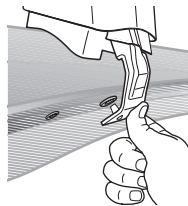
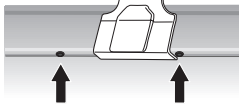
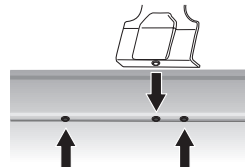
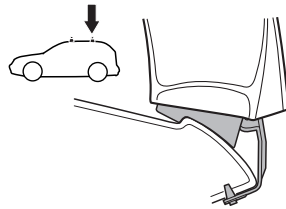
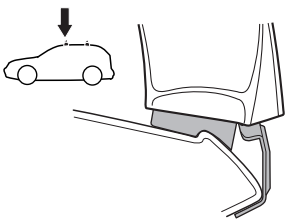
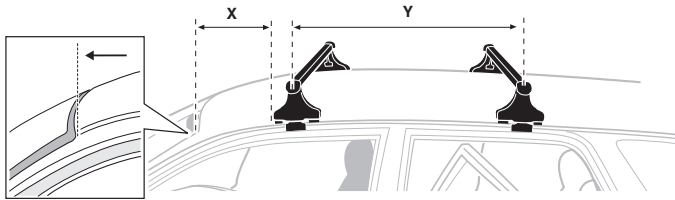
7



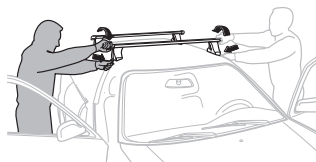
i



	X mm	Y mm	X inch	Y inch
VOLKSWAGEN Polo (Mk.V), 5-dr Hatchback, 09-	180 mm	800 mm	7 1/8"	31 1/2"



8



<b>GB/US</b>	Tighten alternately
<b>D</b>	Die Schrauben abwechselnd anziehen
<b>F</b>	Serrer alternativement chaque côté
<b>NL</b>	Afwisselend aan de linker- en de rechterkant aandraaien
<b>I</b>	Alternare il serraggio delle viti
<b>E</b>	Apretar alternativamente
<b>PT</b>	Aperte alternadamente
<b>S</b>	Dra åt växelvis
<b>FIN</b>	Kierrä vuorotellen
<b>EST</b>	Pinguldage vaheldumisi
<b>LAT</b>	Pielveiciet pamišus
<b>LIT</b>	Užsukinėkite pakaitomis
<b>PL</b>	Śruby dokręcaj naprzemiennie
<b>RU</b>	Затягивайте попеременно

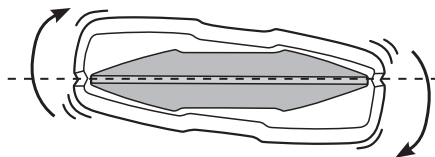
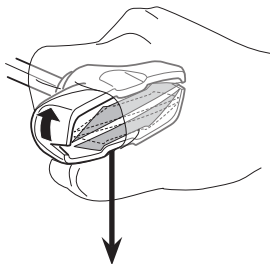
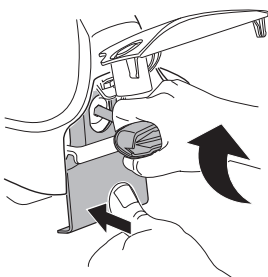
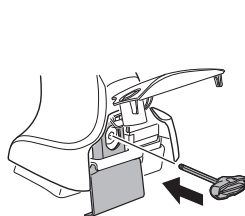
<b>CZ</b>	Pokręťta bagażnika dokręcaj naprzemiennie.
<b>SK</b>	Dofahajte striedavo
<b>SLO</b>	Privijajte izmenično.
<b>HR</b>	Naizmjenočno zategnite
<b>HU</b>	Egymástól függetlenül szorítandó
<b>GR</b>	Σφιγίγες εναλλάξ
<b>TR</b>	Dönüşümlü sıkın

中文 交替拧紧

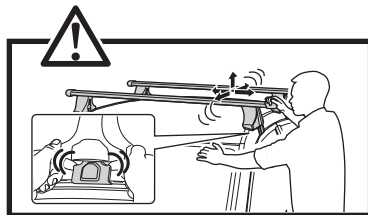
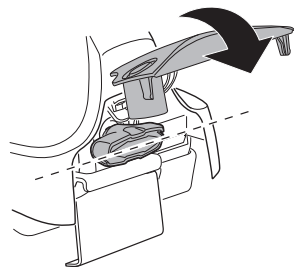
한국어 번갈아 가며 조이십시오.

日本語 交互に締め付けてください。

ไทย ชันในแบบสลับ



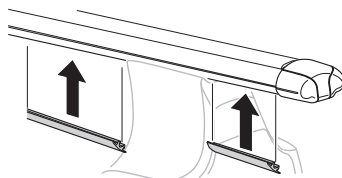
≈ 3 Nm

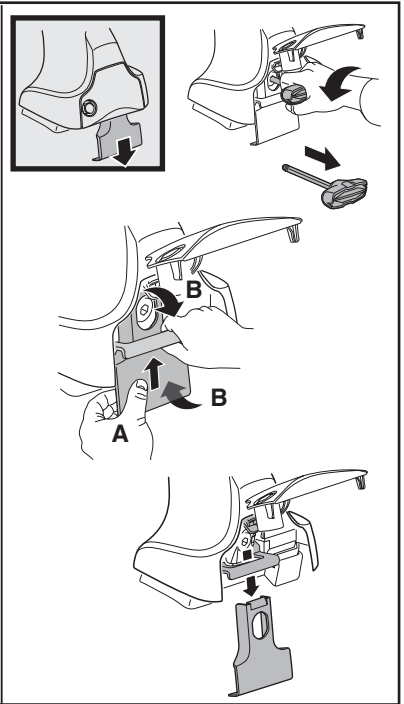
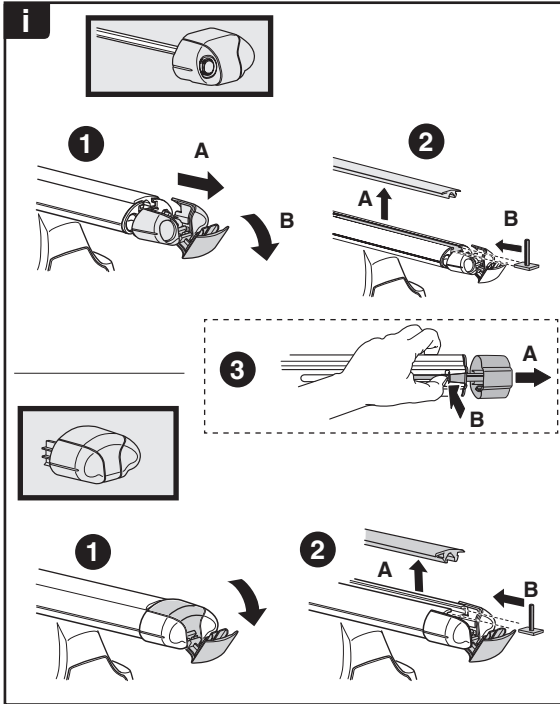
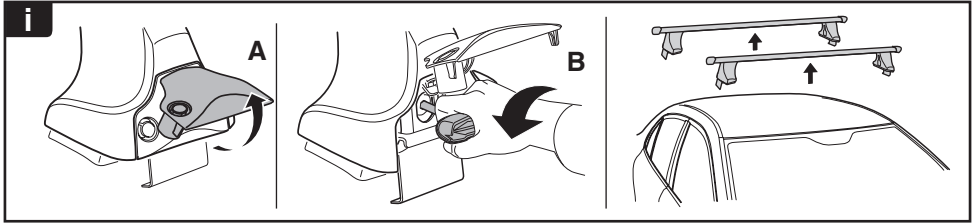


9



x1  
17 mm





**THULE**  
SWEDEN  
**ONE  
KEY  
SYSTEM**



		(x4)
		(x6)
		(x8)
NA		(x10)
EUR		(x12)
ASIA		



WW ▶ Thule Sweden AB, Box 69, 330 33 Hillerstorp, SWEDEN  
NA ▶ Thule Inc., 42 Silvermine Road, Seymour, Connecticut 06483, USA

info@thule.com  
customer.service@thule.com

www.thule.com